
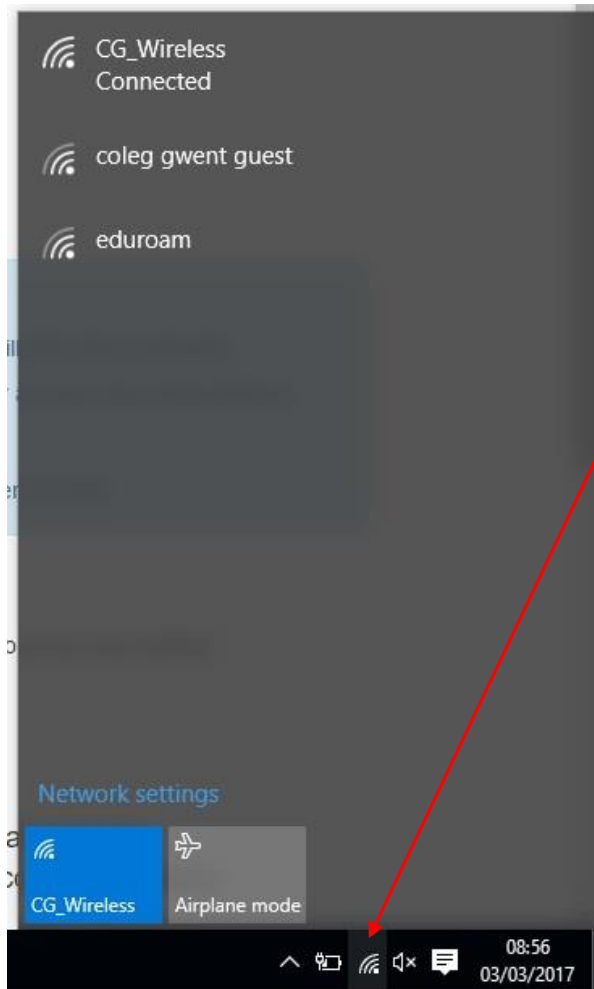
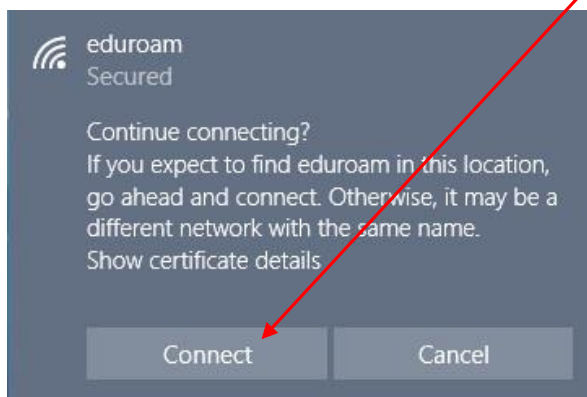


Connecting to **eduroam** from an Windows 10 device

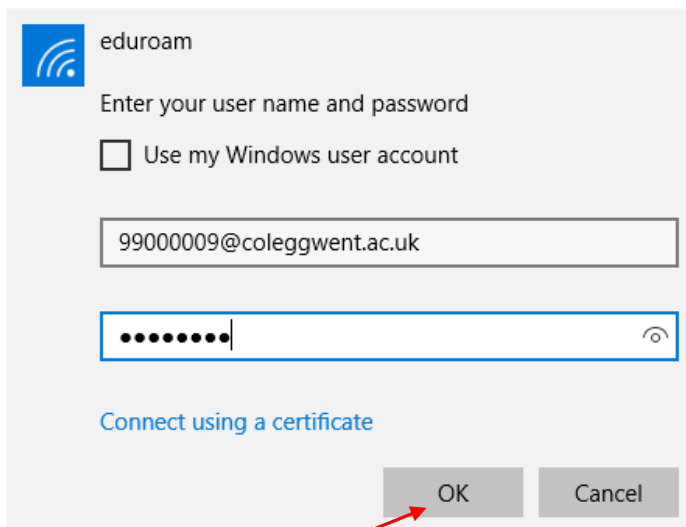
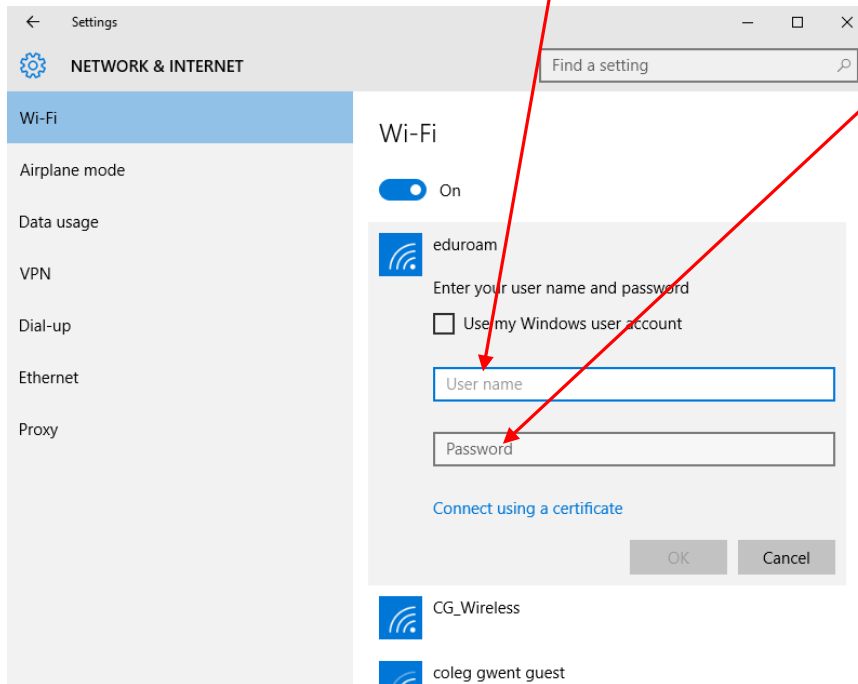
Step 1: Open your Wireless settings by clicking on the **WiFi** icon  in the bottom right of the home screen.



Step 2: Click on **eduroam** then click **Connect**



Step 3: Enter your full College **email address** and normal College **password**.



Step 4: Click **OK** to complete the connection

